

Sweden Emilia Romagna Network

www.sern.eu

www.facebook.com/sern2.0

www.twitter.com/sern2_0



SERN

About SERN

59 MEMBERS:

49

LOCAL / REGIONAL AUTHORITIES

9 NON PUBLIC ACTORS

29 SWEDISH MEMBERS

30 ITALIAN MEMBERS

BILATERAL NETWORK



Features of SERN

Focus on north-south collaboration (only bilateral network in Europe)



Multilevel approach: different level of government involved

Inclusive approach: open to civil society and private actors



Objectives of SERN

The main objective of the network is to establish long lasting collaboration between Italy and Sweden through

- The exchange of good practices in local and regional policies
- The exchange of information, know-how and people
- Promotion of economical relation and interdependence

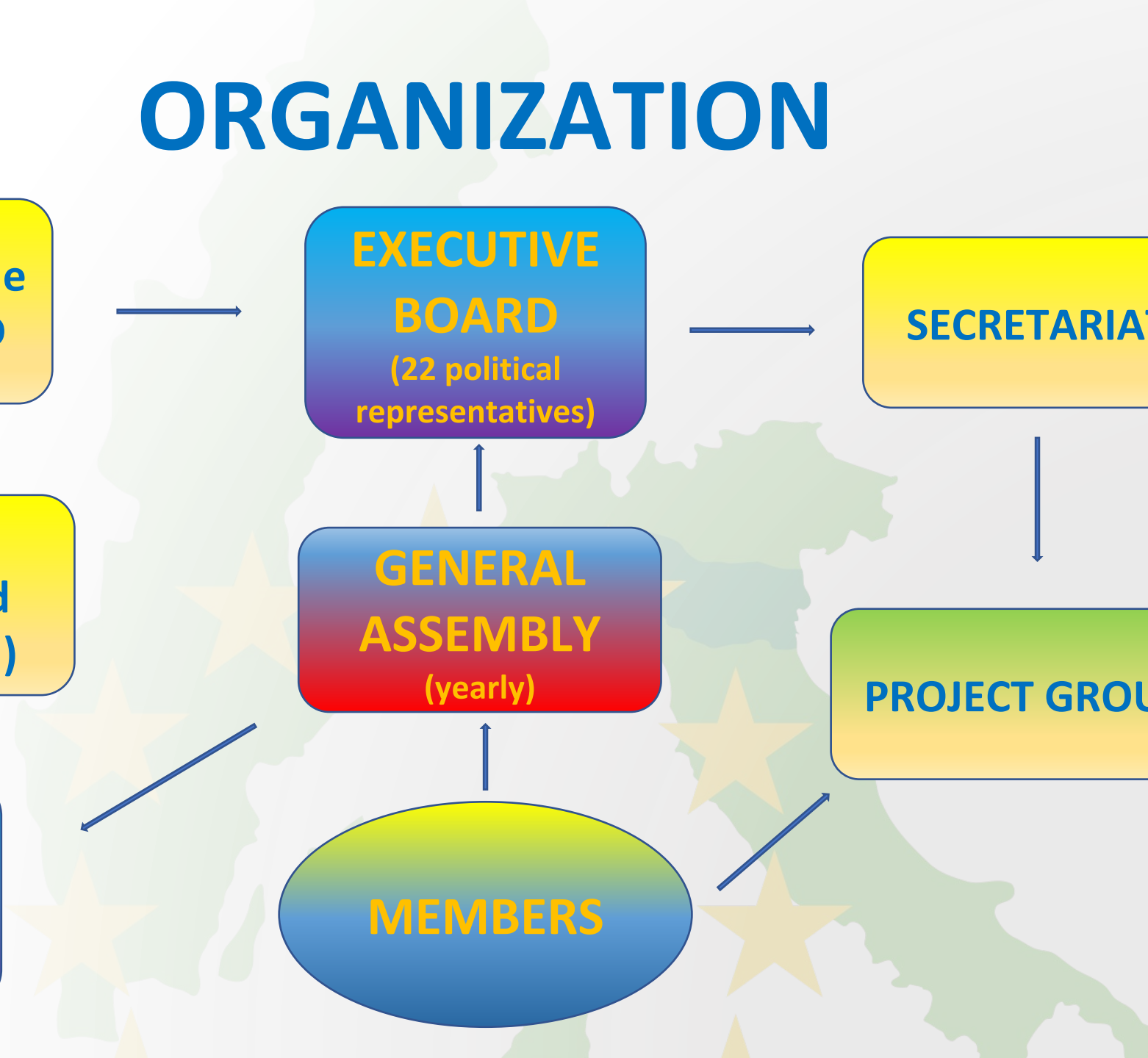


ORGANIZATION

```
graph TD; MEMBERS([MEMBERS]) --> GA[GENERAL ASSEMBLY (yearly)]; MEMBERS --> PG[PROJECT GROUP]; GA --> EB[EXECUTIVE BOARD (22 political representatives)]; EB --> SECRET[SECRETARIA];
```

The diagram illustrates the organizational structure of the European Union, set against a background of a map of Europe and the EU flag stars. The hierarchy is as follows:

- MEMBERS** (represented by a blue oval at the bottom) are the foundational entities.
- GENERAL ASSEMBLY (yearly)** (represented by a red-to-blue gradient rounded rectangle) receives input from the MEMBERS and reports to the EXECUTIVE BOARD.
- EXECUTIVE BOARD (22 political representatives)** (represented by a blue-to-purple gradient rounded rectangle) receives input from the GENERAL ASSEMBLY and reports to the SECRETARIA.
- SECRETARIA** (represented by a yellow rounded rectangle) is the central administrative body.
- PROJECT GROUP** (represented by a green-to-yellow gradient rounded rectangle) receives input from the MEMBERS and reports to the SECRETARIA.



STRATEGY

EDUCATION AND LEARNING

LOCAL/REGIONAL DEVELOPMENT

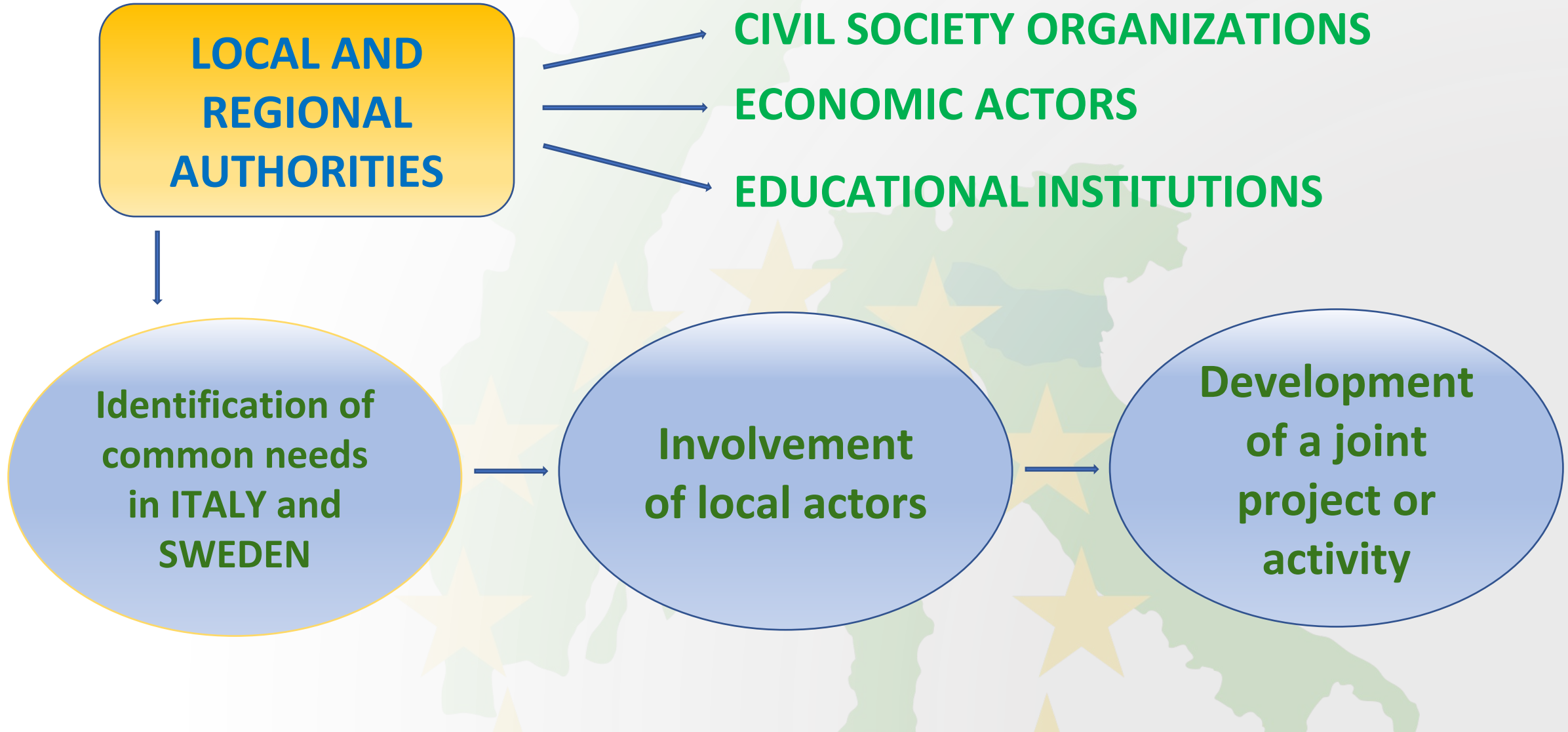
SOCIAL INCLUSION AND MIGRATION

HEALTH AND WELFARE

ENERGY AND ENVIRONMENT

CAPACITY BUILDING

STRATEGY



WORKING METHOD

**Development of projects
financed by its members**



**Development of projects
financed by external funds
such as national and/or EU
fundings**

**Exchange of information,
experience, knowledge,
best practices, staff
exchanges, learning
partnerships**

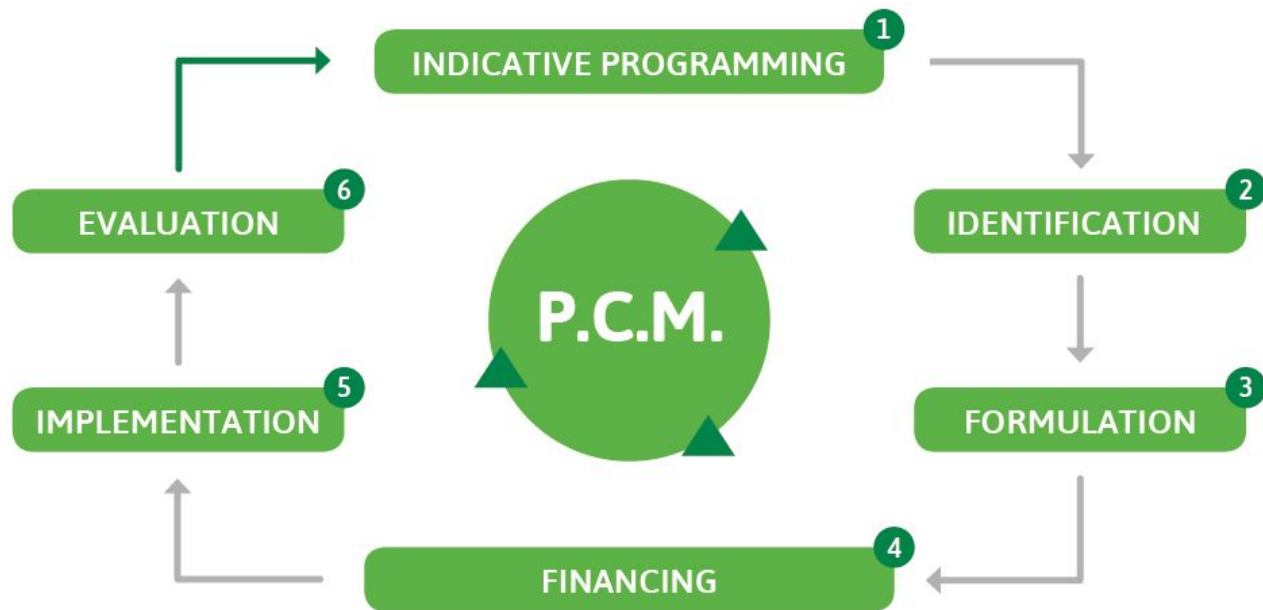


**Fostering economic
links**



WORKING METHOD

THE PROJECT CYCLE



The development of new projects is a strategic process of collaboration between members around a specific theme. The process is based on the Project Cycle Management model (P.C.M.)

PROJECT PROPOSALS

SERN members can act as **project promoter** or can take part to processes initiated by another partner

New proposals are collected in 3 specific moments during the year

FIRST SLOT

15 January – 15 February

SECOND SLOT

1 June – 30 June

THIRD SLOT

15 October – 15 November



EDUCATION and LEARNING

overview on main projects

Paths of **integration** in educational contexts

(2006-2007; 2008-2009)

Promotion of **local food** through exchanges among restaurant schools (2007)

Culture and leisure policies project (2008)

Quality of the pre-school services (2008-2009)

Seminars on **outdoor education** at pre-school level (2009)

PYST Project - Partnership for youth sport trainers (2009-2011)

Organic food in local schools: Identifying problems and developing solutions through the exchange of best practices (2010-2012)

CREANET - LLP Network on creativity in pre-school education (2010-2013)

Flow4You (2011-2013) youth policies)

COBIOS – Continuity between indoor and outdoor spaces in pre-schools (2013-2015)

EQUAP Enhancing quality in ECEC through participation (2014-2017)

SIA-Prod: An innovative self-improvement approach for the professional development of Early Childhood educators (2017-2019)

SIDEIS – Developing learning contexts facilitating integration



ENERGY and ENVIRONMENT

overview on main projects

Energy efficiency network (2010)

3X20 Network - awareness raising actions (2010-2012)

Organic Food in Schools (2010-2012)

Go green now! 2011-2013 (Behavioural change in local authorities and schools)

ECOWAS 2013-2015 - Waste Management practices

50-50 Project 2015-2017



LOCAL AND REGIONAL DEVELOPMENT

overview on main projects

Local sustainable tourism and development 2006-2009

Innovation in local development 2009-2011

Innovative policies and actions for the seniors in Europe 2010-2012

Staff Exchange among cooperatives 2011

Young People And local Development 2011-2013

European cities network for business friendly environment 2013-2015

Bags4Youth -Job guidance services targeting young people